



### 5/29 Thomas Mitchell Drive Wodonga VIC

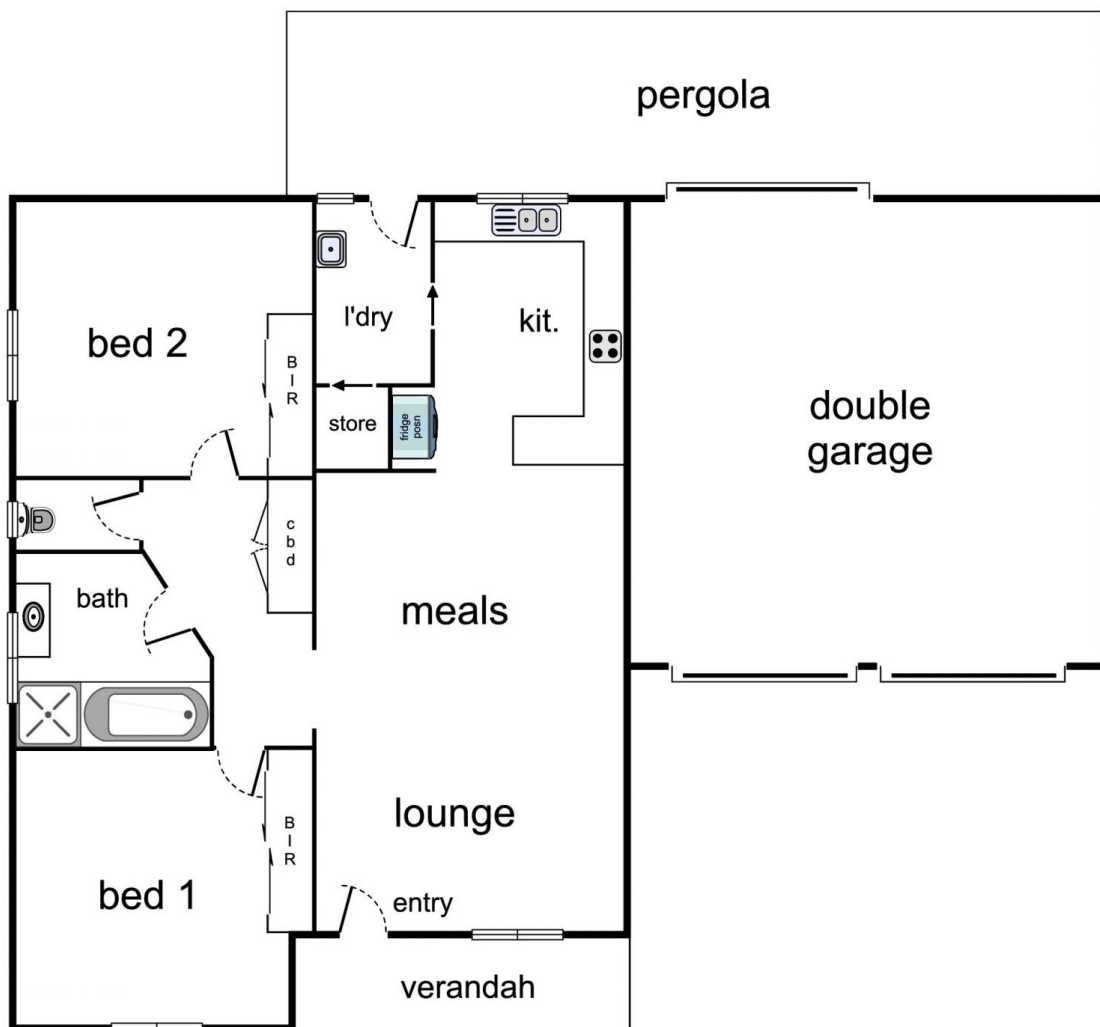
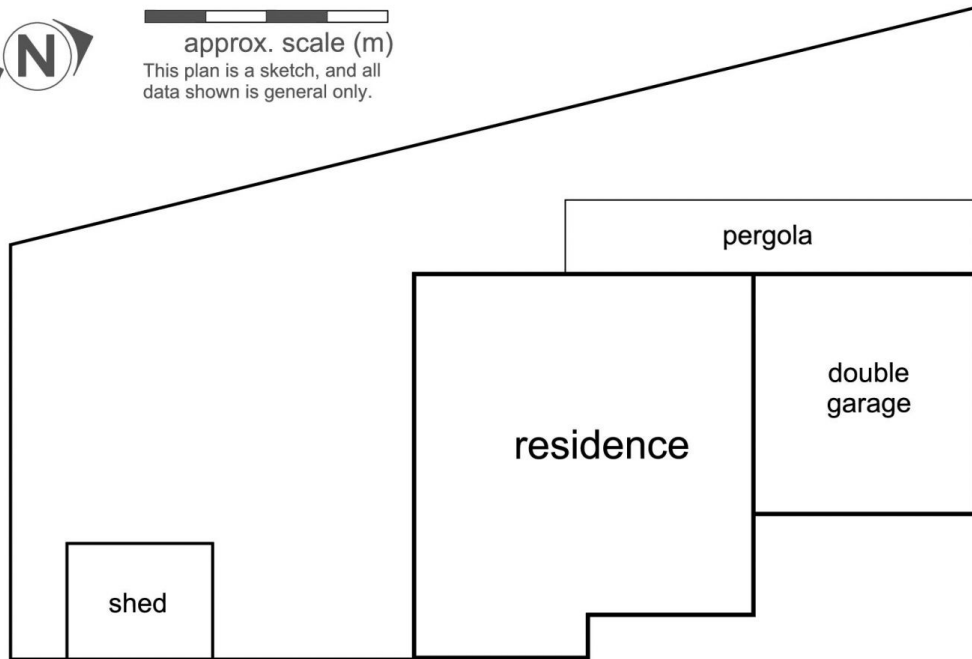
2 1 2

One of the most exceptional units we've presented in quite a while. This residence showcases numerous features that set it apart from others. Dual garage, plus end of Drive privacy and parking, adjoins the common shady garden with no maintenance required. Expansive living space, Two spacious bedrooms. Full bathroom with separate shower. Recently renovated kitchen with dishwasher and spacious pantry. Refrigerated split Air conditioning. Generous covered outdoor area for year-round entertaining. Perfect for hobbyists - a shed with power, Secluded yard, ideal for a petite vegetable patch or a small garden. Just a brief walk from High St. This Townhouse is one not to be missed.

**Price** : \$420,000  
**Land Size** : 315 sqm  
**View** : <https://www.brianphegan.com.au/sale/vic/north-eastern/wodonga/residential/unit/7936402>



**Brian Phegan**  
**02 6040 7173**



5-29 Thomas Mitchell Drive, Wodonga