



2 Mirabelle Court Wodonga VIC

3 2 3

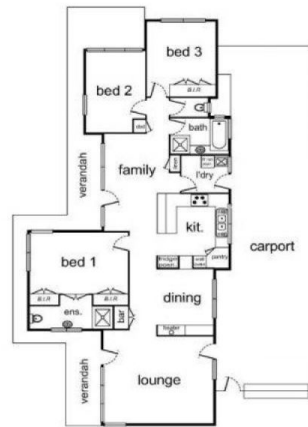
Discover the charm and comfort of this family-oriented residence situated in the heart of Castle Heights. This property occupies a generous corner lot of 811m², providing ample space. Enjoy the warm and inviting natural light creating a cozy atmosphere for your family. Step into your new home through a welcoming entry that sets the tone for the comfort that lies within. The home features three double bedrooms, each with built-in robes. The master bedroom includes an en-suite for added convenience. Stay comfortable with split system air conditioning, ensuring pleasant temperatures throughout the year. A triple carport offers ample parking space for your vehicles. The property is conveniently located close to schools, shops, and parkland, making daily life a breeze. Enjoy a secure yard that's perfect for children and pets to play safely.

This property is ready for you to move in now and make it your own.
Caravan friendly.

Price : \$ 450,000
Building Size : 130 sqm
Land Size : 811 sqm
View : <https://www.brianphegan.com.au/sale/vic/north-eastern/wodonga/residential/house/7701917>



Brian Phegan
02 6040 7173



2 Mirabelle Court, Wodonga