



483 Hanel Street East Albury NSW

7 4 7

Land area 997m2. Building area 291m2.

Projected rental income \$48,000pa approx.

Zone: R1 General Residential. Backs onto the Harold Mair Bridge, one block from Dean Street. House : Three generous bedrooms, Lounge with gas log fire, adjoining family room. Gas HWS. Split system reverse cycle air conditioning units. Ceiling fans. Two bathrooms, dine in kitchen with pantry and elevated electric oven. Tall 3.2m Ceilings, dado, frieze heritage timber fretwork. High profile architraves and skirting. Distinctive split gables with corrugated iron roof.

Red brick and classic entry verandah. Cottage garden with period front fence. Carport and breezeway.

Flats: Two x 2 Bedroom brick veneer tiled roof. 2.4m ceiling. Electric HWS.

Electric oven, split system reverse cycle air conditioning.

Built in Robes, separate bathroom, laundry.

Awnings, security doors. Carport.

Further Details Contact the Auctioneer: Brian Phegan 0418 578 079

Price : \$ 890,000

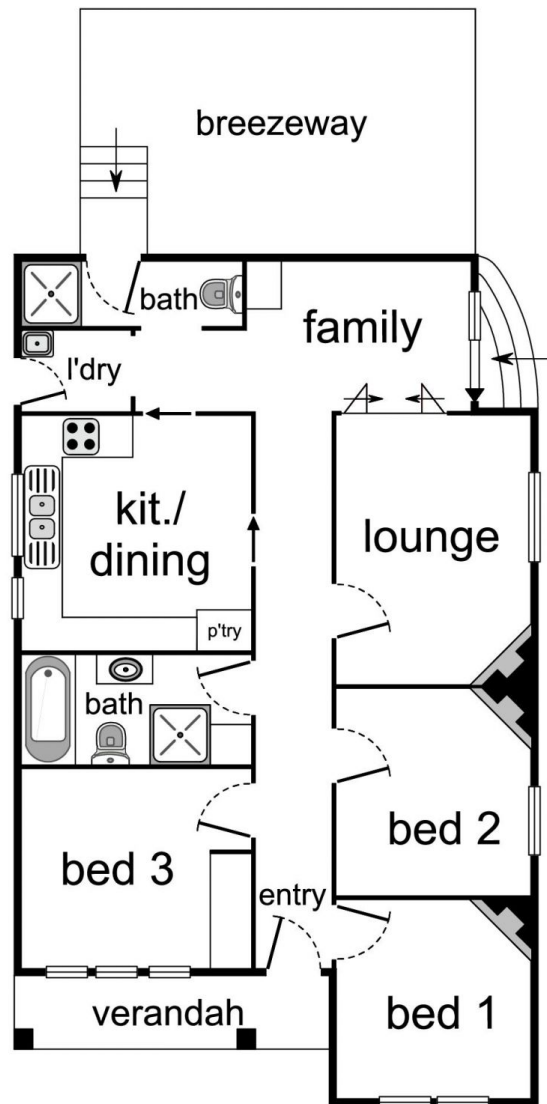
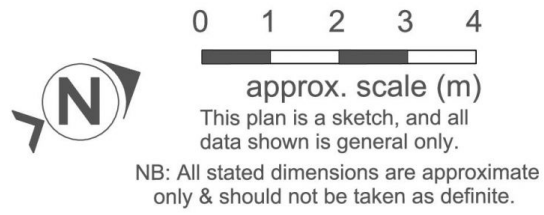
Building Size : 311 sqm

Land Size : 997 sqm

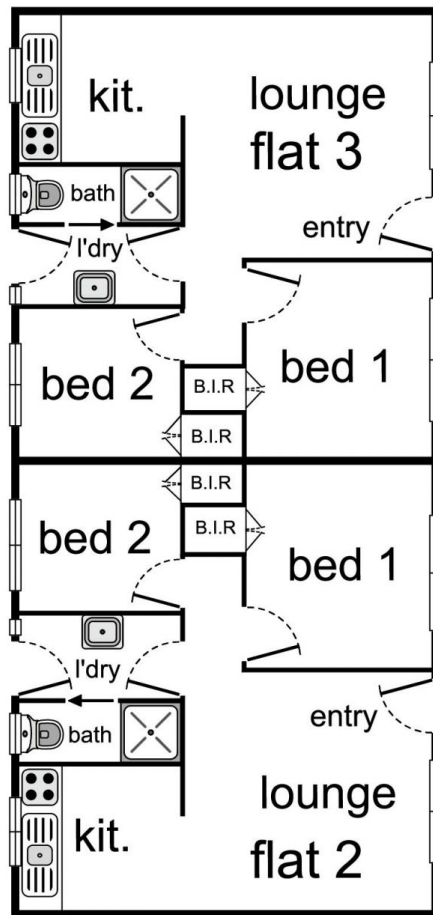
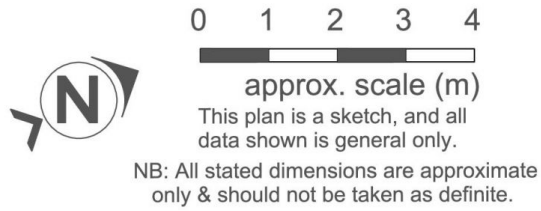
View : <https://www.brianphegan.com.au/sale/nsw/murray-region/east-albury/residential/block-of-units/7205752>



Brian Phegan
02 6040 7173



483 Hanel Street, East Albury



483 Hanel Street, East Albury