

3 Rosella Ridge East Albury NSW

5 4 3

One of East Albury's finest.

The ultimate hillside retreat / entertainer, located high side. With commanding yet quiet bush land setting.

Captivating views out living picture double glazed windows. Unrivalled luxury in multiple living areas. "On Trend" newest ideas features and finishes combine modern day living functionality and style together with an understated elegance. A Grand entry, polished exposed aggregate concrete floors.

Dining options are not limited to formal, poolside alfresco, outside kitchen with pizza oven. Tall ceilings, stunning indulgent integrated Kitchen with appliances to match clever planning. Downstairs self contained Guest Wing.

Triple Garage includes extended Bay and under home storage.

With such memorable view, polished presentation and absolute ease of connect to the CBD Vibe / Cultural centre 3 Rosella Ridge is a Property not to missed.

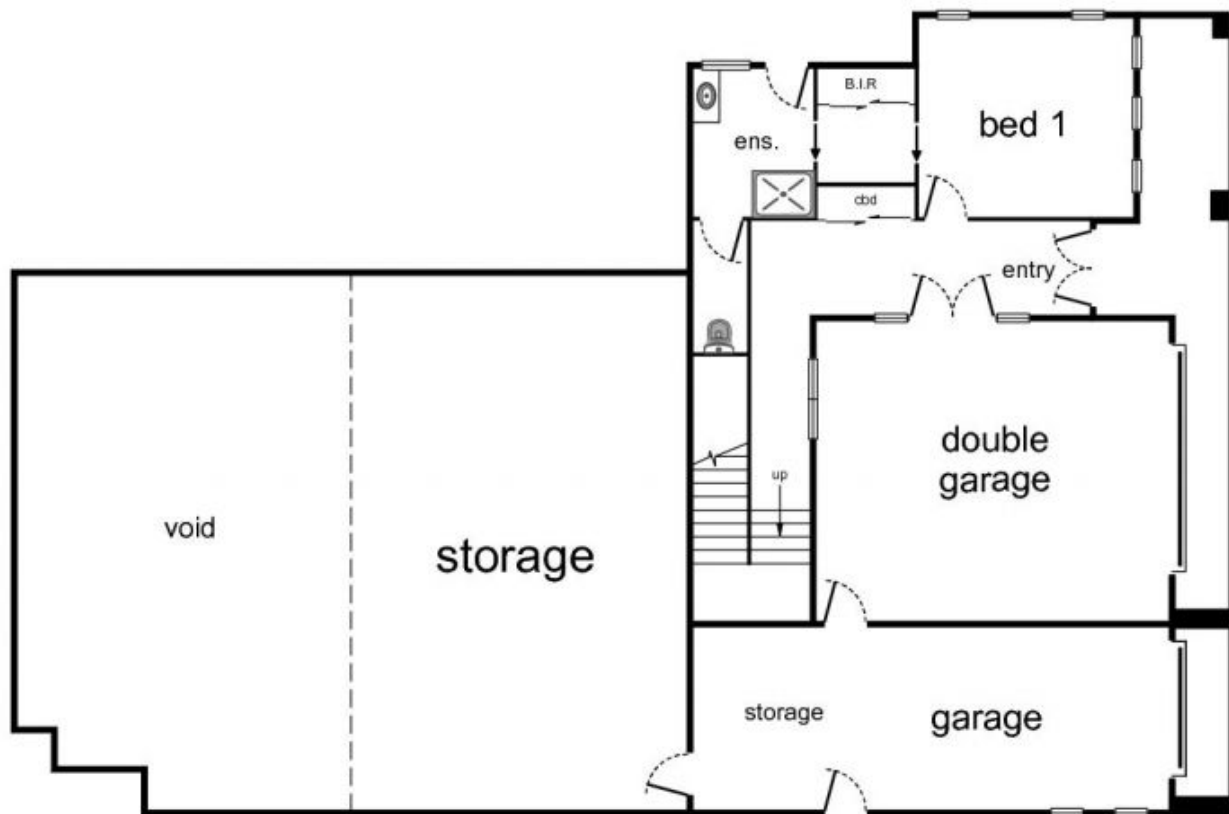
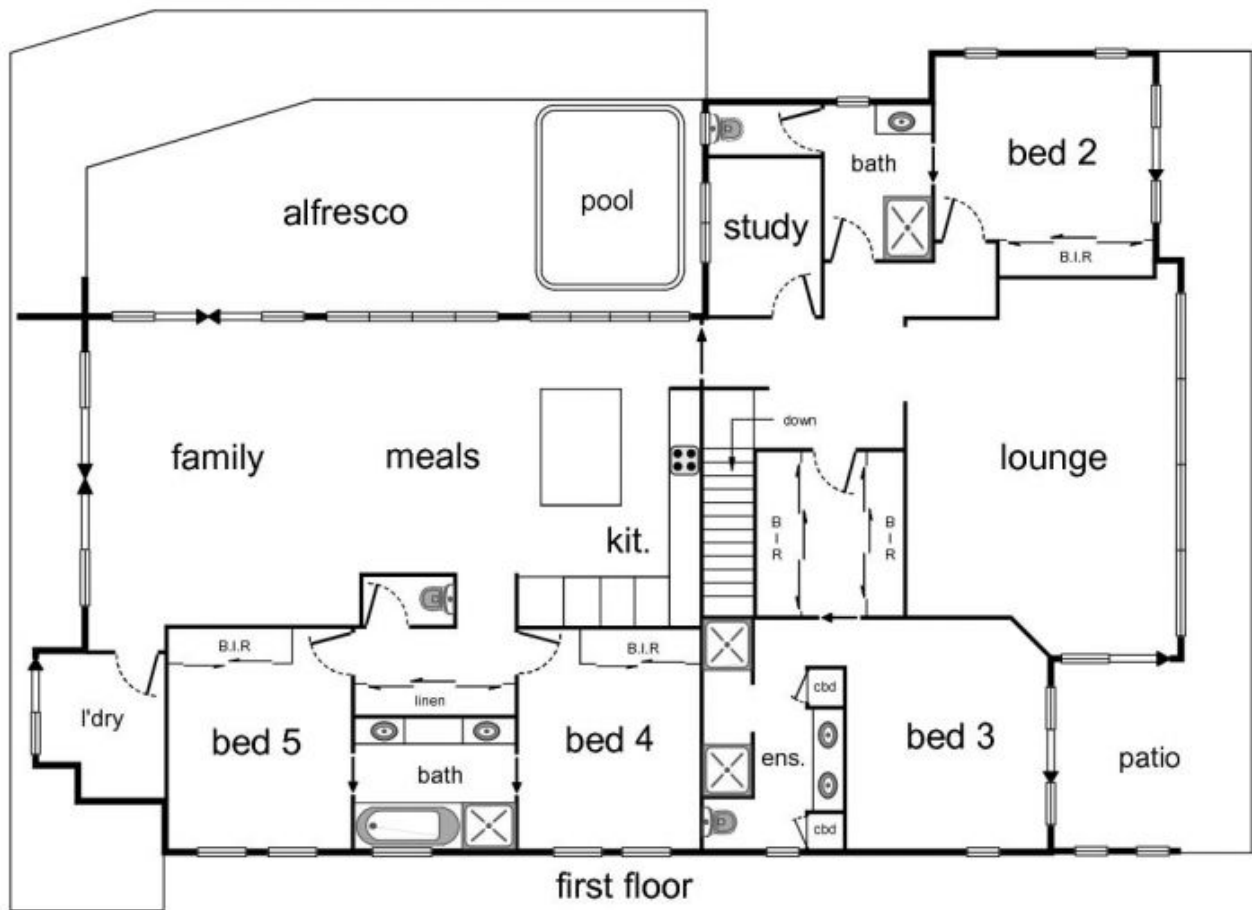
Building Size : 430 sqm

Land Size : 712.8 sqm

View : <https://www.brianphegan.com.au/sale/nsw/murray-region/east-albury/residential/house/5932591>



Brian Phegan
02 6040 7173



3 Rosella Ridge East Albury