



257 Rivergum Drive East Albury NSW

5 🚗 2 🚗 5 🚗

257 Rivergum Drive, Eastern View Estate, East Albury. Showcasing a highly efficient and sustainable freestanding home of custom individual design with the highly effective use of traditional materials.

Offering superb indoor and outdoor flow / Constructed in 2010 by B & H Homes award winning Builders .

This one of a kind and completely individual homes of 308m2 is situated on a double level block of some 1626m2, landscaped garden with rear access and drive through Garaging for five cars. Masterful entry, tall ceilings, formal and casual living areas with North East aspect, lead to covered pavilion gas heated spa and pool.

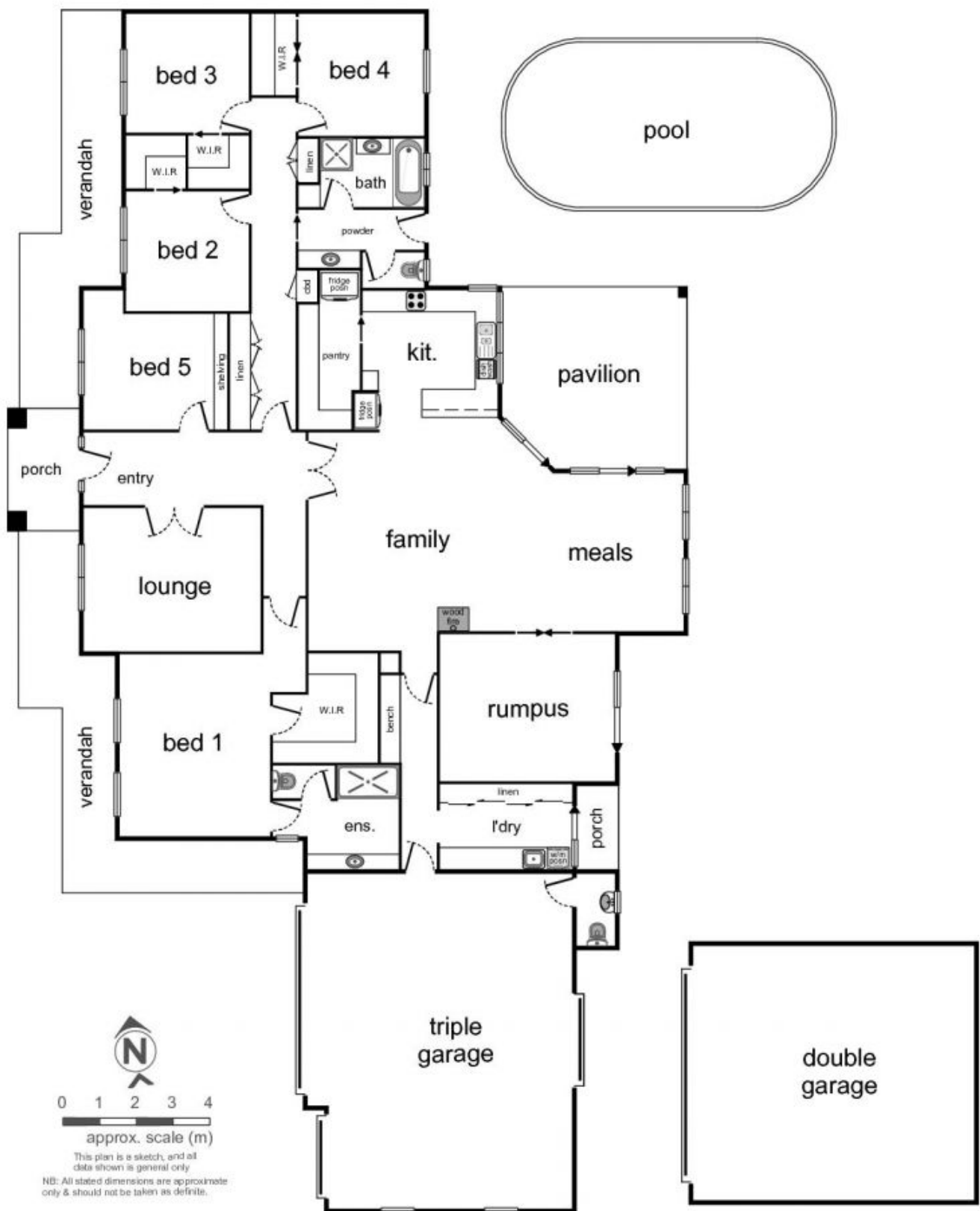
Incorporating the tranquil rear garden offering a great sense of privacy and seclusion. Peaceful children's retreat.

Price : \$ 760,000
Building Size : 308.55 sqm
Land Size : 1627 sqm
View : <https://www.brianphegan.com.au/sale/nsw/murray-region/east-albury/residential/house/5932589>



Brian Phegan
02 6040 7173

<https://www.brianphegan.com.au>



257 Rivergum Drive Eastern View Estate