



328 Norfolk Street East Albury NSW

4  2  2 

Highlights

A North Facing Rear Yard 1353M2
Guest / Family Wing
Short distance to city
Modern / light / bright
Tall vaulted ceilings
Tranquil Location
Relaxing North Facing court yard
Ducted & split climate control
Gym

Plus

Square set cornice
Hydronic in floor heating
Level access
Solar to grid
Garden pizza oven
Leafy alfresco
Elevated garden beds

Price : \$ 620,000
Building Size : 258 sqm
Land Size : 1352 sqm
View : <https://www.brianphegan.com.au/sale/nsw/murray-region/east-albury/residential/house/5932557>



Brian Phegan
02 6040 7173

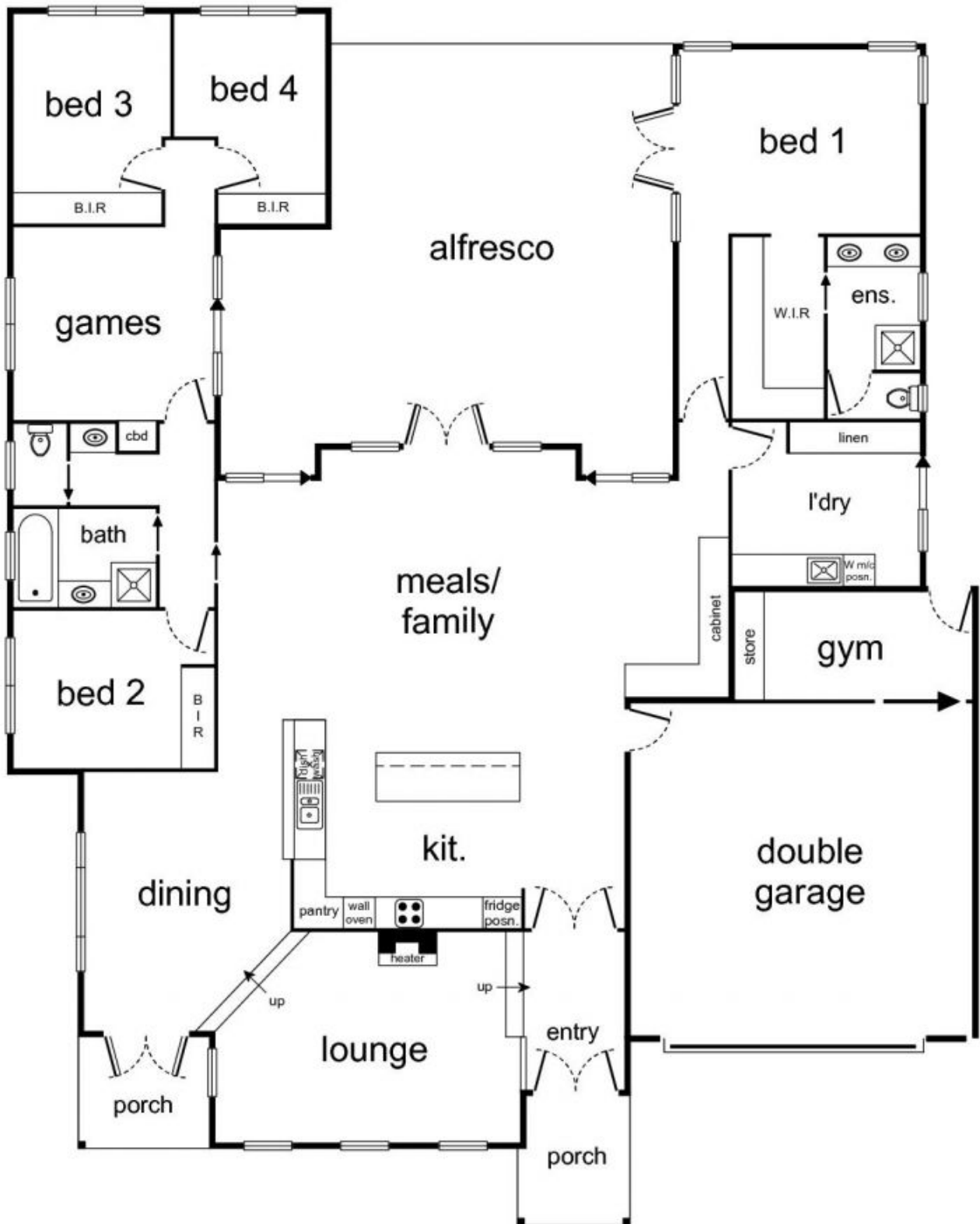


0 1 2 3 4



approx. scale (m)

This plan is a sketch, and all data shown is general only.



328 Norfolk Street, East Albury