



7 Canary Court Wodonga VIC

4 2 2

Highlights

North Facing Rear Yard 947m2
Shade Trees
Room for Sheds
Elevated
Court Location
Views

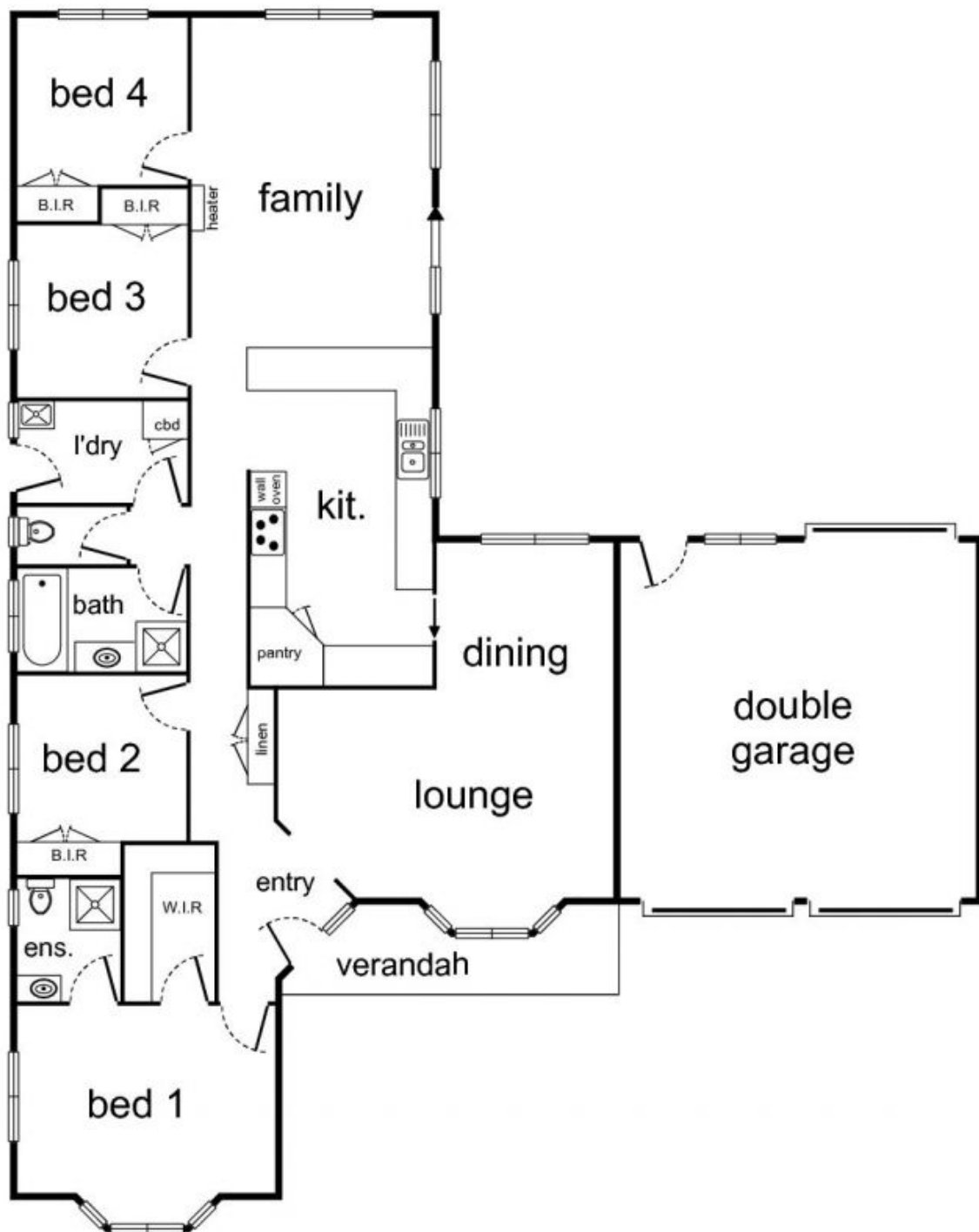
Price : \$ 310,000
Building Size : 191 sqm
Land Size : 946 sqm
View : <https://www.brianphegan.com.au/sale/vic/north-eastern/wodonga/residential/house/5932555>

Plus

4 Bedrooms
2 Bathrooms
Ducted Heating
Ducted Cooling
Drive through garage
Pergola
Alatalo Bros Build



Brian Phegan
02 6040 7173



7 Canary Court Wodonga