



6 Mountain View Drive Drive Lavington NSW

3 2 2

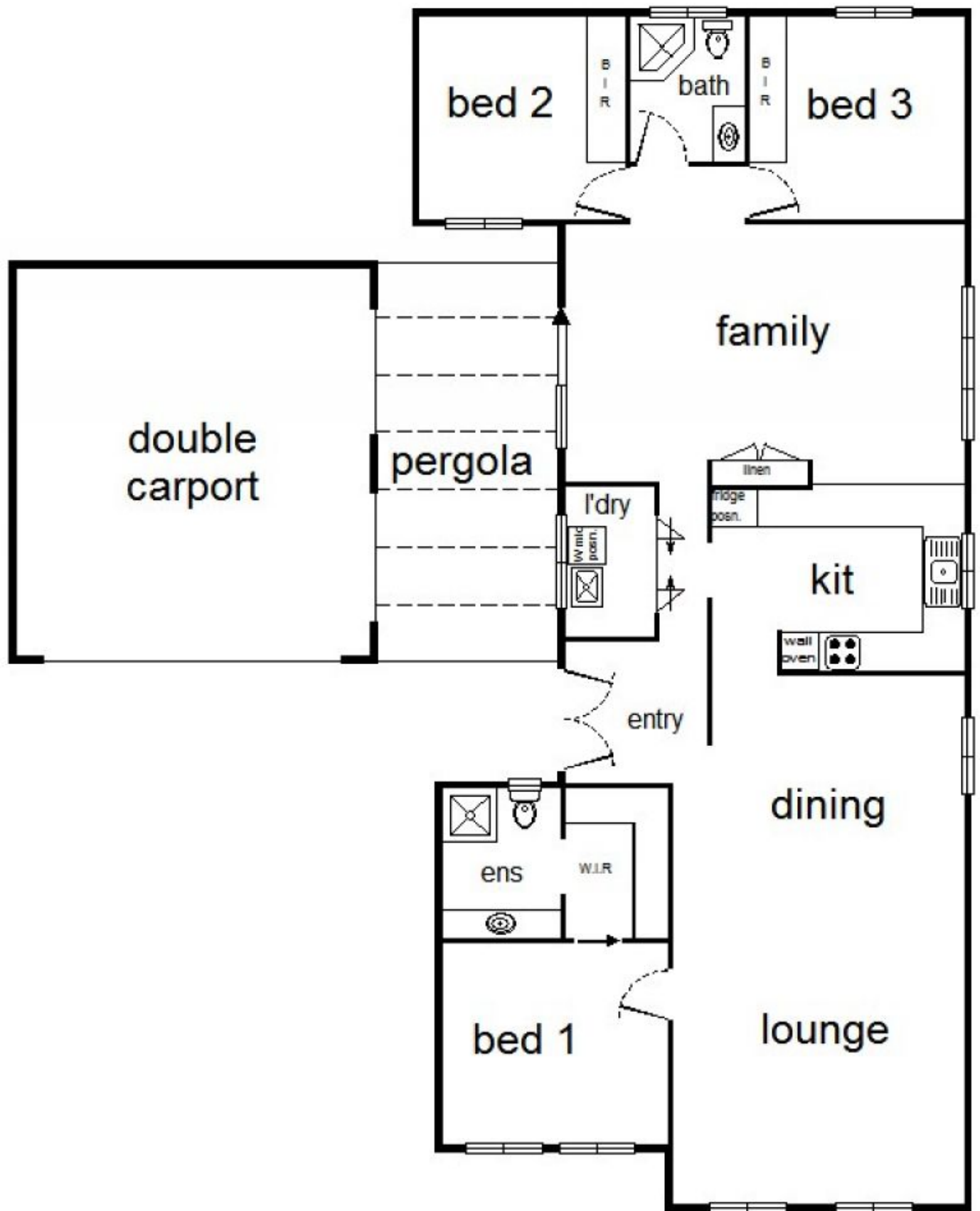
Highlights

- Surprisingly spacious plan
- New Kitchen
- Two living areas
- Twin bedrooms, walk in robes, built in robes, ensuite
- R.C. Air conditioning, Insulated
- North Aspect
- Specular Alfresco
- Large yard

Price : \$ 268,000
Building Size : 158 sqm
Land Size : 815.2 sqm
View : <https://www.brianphegan.com.au/sale/nsw/murray-region/lavington/residential/home/5932525>



Brian Phegan
02 6040 7173



6 Mountain View Drive