



424 Crisp Street Albury NSW

2 2 1

Quintessential refinement and beauty is offered with rare magnificence in scale.

This stunning Central Albury Townhouse is just beautiful.

Situated at the eastern end of Crisp Street, arguable one of Albury's finest, with North facing Terrace / Courtyard and alluring Cottage Garden.

Uncommon attention to detailed quality in planning finish and decor with an ambiance that is unforgettable .

Village vibe offers a short stroll to cafes, restaurants, and cultural precinct.

Sleek Kitchen, bay window servery, St George electric oven, gas hot plates

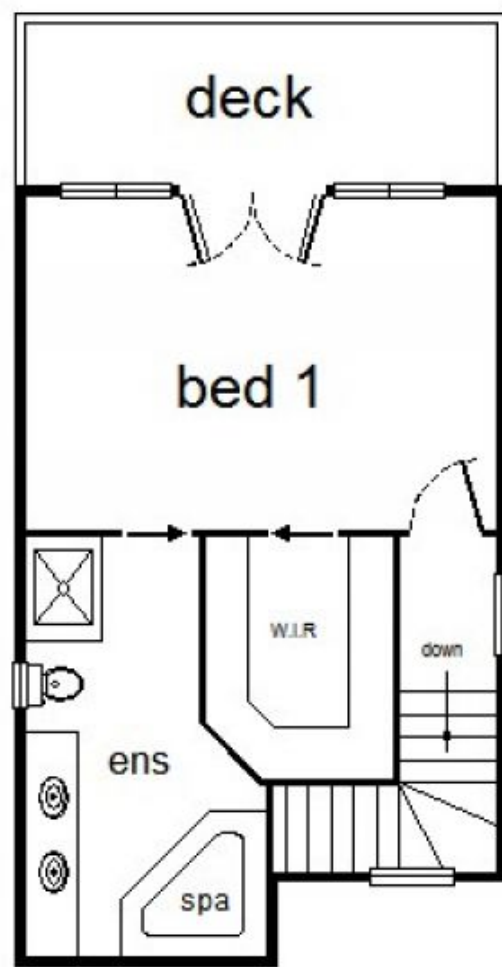
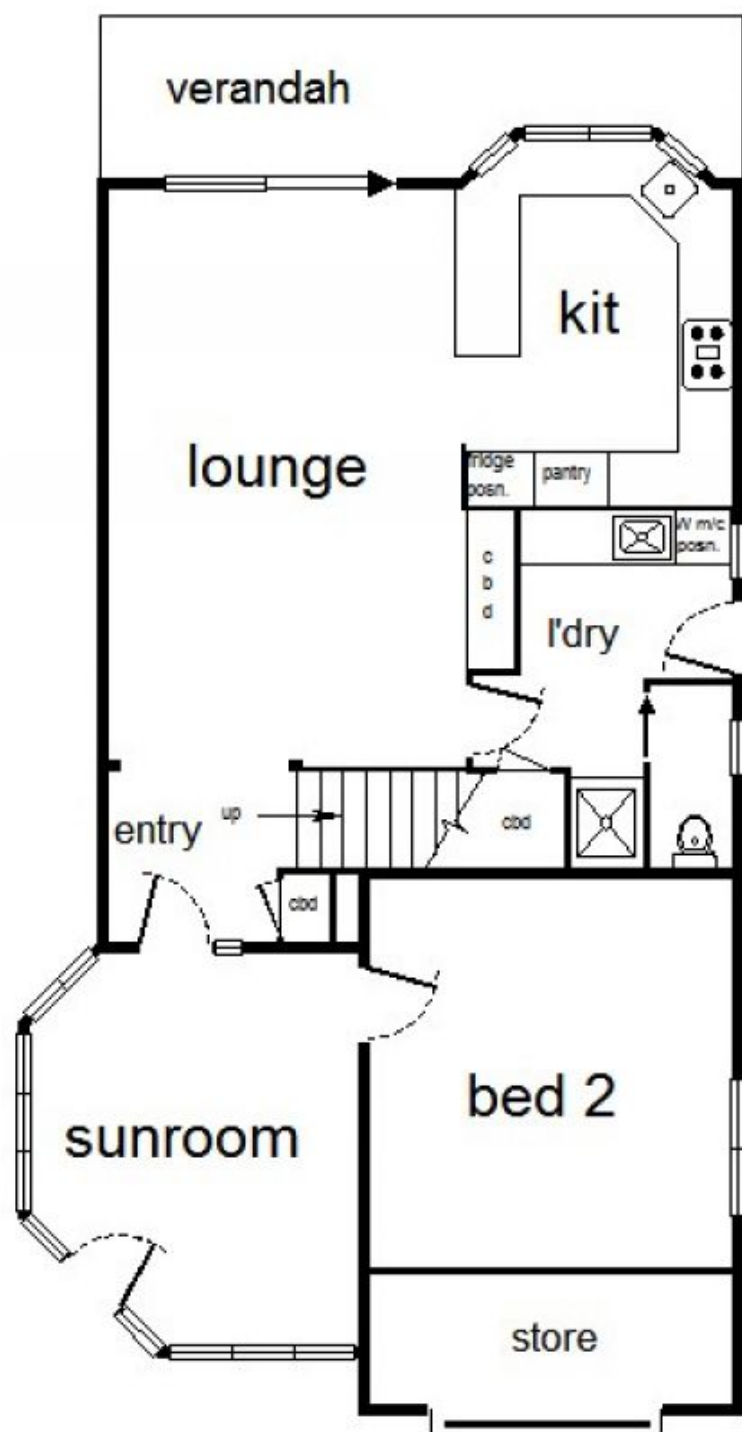
Double hung double glazed windows, Commissioned mosaic in spa en-suite

Sun room / Library

Price : \$ 360,000
Building Size : 143 sqm
Land Size : 250 sqm
View : <https://www.brianphegan.com.au/sale/nsw/murray-region/albury/residential/townhouse/5932518>



Brian Phegan
02 6040 7173



0 1 2 3 4

approx. scale (m)

This plan is a sketch, and all data shown is general only.

424 Crisp Street Albury