



## 2 Elsa Court Wodonga VIC

3  3  4 

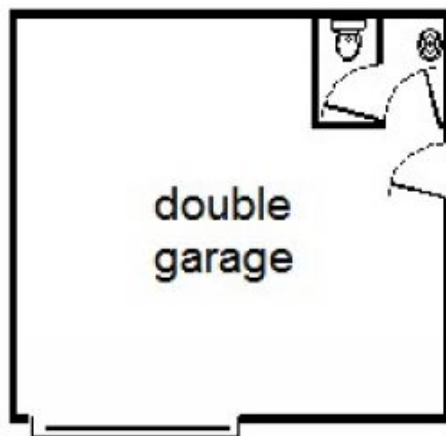
### Highlights

Excellent Construction  
Scope to improve  
Roller door / double carport  
Double lock up garage / workshop

### Plus

Generous 653M2 Block  
Spacious 148m2 Plan  
Refrigerated Cooling, Gas Heating  
Likely Rent \$280pw

**Price** : \$ 220,000  
**Building Size** : 148 sqm  
**Land Size** : 653 sqm  
**View** : <https://www.brianphegan.com.au/sale/vic/north-eastern/wodonga/residential/house/5932513>

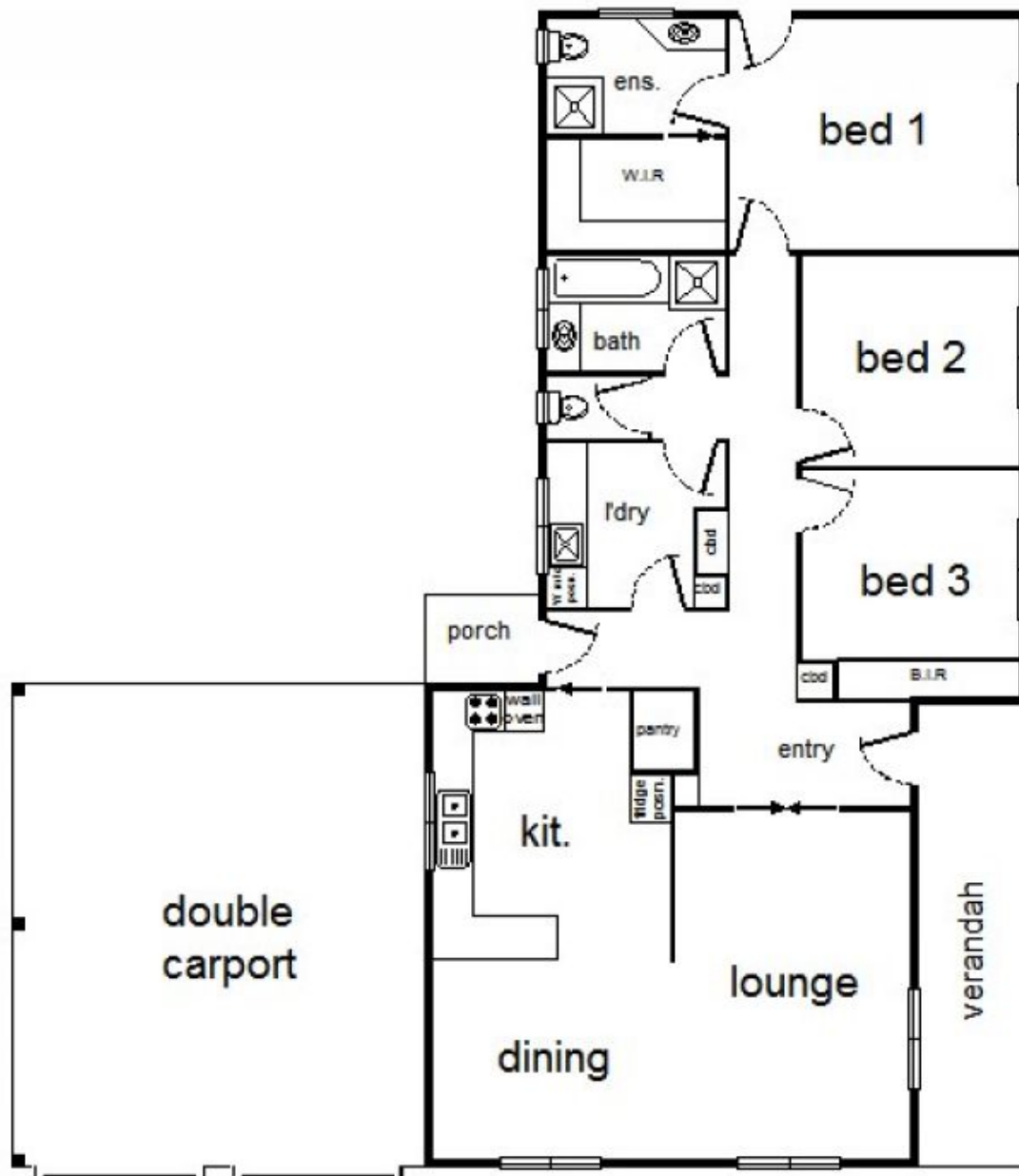


0 1 2 3 4



approx. scale (m)

This plan is a sketch, and all data shown is general only.



2 Elsa Court, Wodonga