

36 Waratah Way Wodonga VIC

3 2 3

Highlights

If you are a little gifted with a paint brush and will not flinch at the thought of installing carpet or a floating floor this first Home Investment has good bones and is positioned in one of Wodonga's long standing premier estate "Parkland Estate".

On offer behind the high brick fence is the attractive elevation of this three bedroom Brick Veneer tiled roof home. All bedrooms with built in robes master with walk in robes and en-suite, 80's bathroom and kitchen.

Ducted gas heating and evaporative cooling, solar, double carport, single garage. Offers great connectivity to schools, shops, sports fields, parkland.

If you are high on inspiration prepared to make some changes and want good value please consider.

Price : \$ 215,000
Building Size : 132 sqm
Land Size : 530 sqm
View : <https://www.brianphegan.com.au/sale/vic/north-eastern/wodonga/residential/house/5932509>



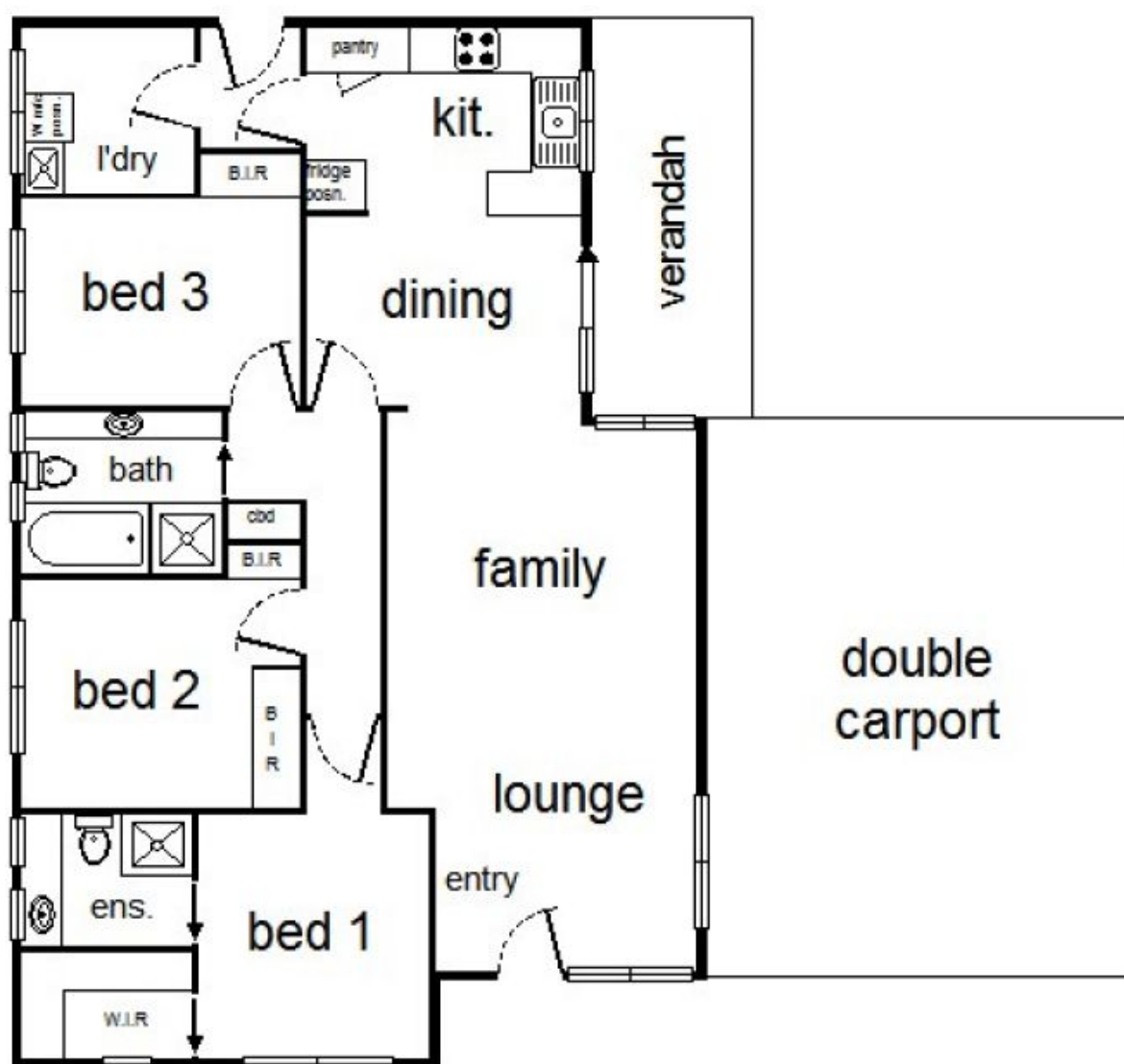
0 1 2 3 4



approx. scale (m)

This plan is a sketch, and all data shown is general only.

garage



36 Waratah Way, Wodonga