



158 Simmonds Creek Road Tawonga South VIC

4 2 3

You'll Love

This impressive Hillside Residence inspired by the Beautiful and serene Mountain vista. Durable double brick construction together with tranquil and private space. Four generous Bedrooms BIR, WIR, En-suite, cozy Lounge, welcoming open space living, impressive and practical Kitchen with Butlers Pantry, Partnership Offices, warm Wood and zoned in Floor heating.

A peaceful hide a way with superb North /South orientation, set in a beautiful mature Garden, all only a few moments from Town, schools and transport.

Complemented by 18m x 16m Machinery Shed and 18m x 6m all purpose Shed and Stables. Site 2Ha (5 acres) low density residential land suitable for further subdivision S.T.C.A

[CLEARING SALE: Farm machinery equipment House hold effects sundries Garvin AZZI Auctions 0412698298]

Highlights

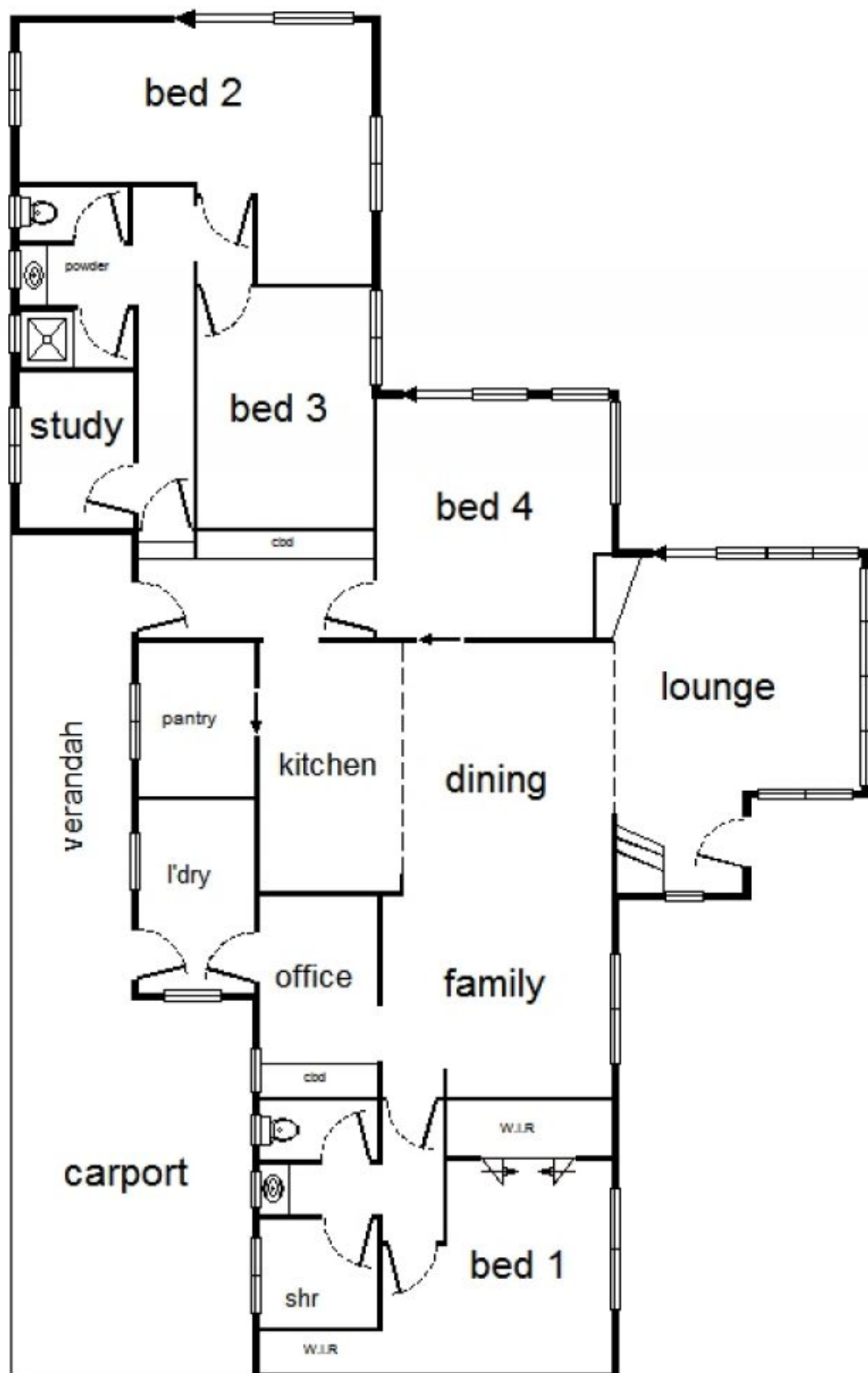
Building Size : 189 sqm

Land Size : 2 ha

View : <https://www.brianphegan.com.au/sale/vic/north-eastern/tawonga-south/residential/rural/5932505>



Brian Phegan
02 6040 7173



158 Simmonds Creek Road