



1 338 Norfolk Street Albury NSW

3 **1** **1**

Highlights

Popular East Albury Location
Close to corner store and CBD
Open Plan, Gas Log fire, tall ceilings
Three spacious bedrooms BIR
Remote L/U Garage, internal access
Achievable Rent \$350pw

Plus

Bi-fold Doors to entertainers Deck
Sensational Chefs Kitchen
Ducted R/C Heating & Cooling
Must inspect opportunity
Gas hot water
Electric Stove

Price : \$ 350,000
Building Size : 125 sqm
View : <https://www.brianphegan.com.au/sale/nsw/murray-region/albury/residential/townhouse/5932502>



Brian Phegan
02 6040 7173

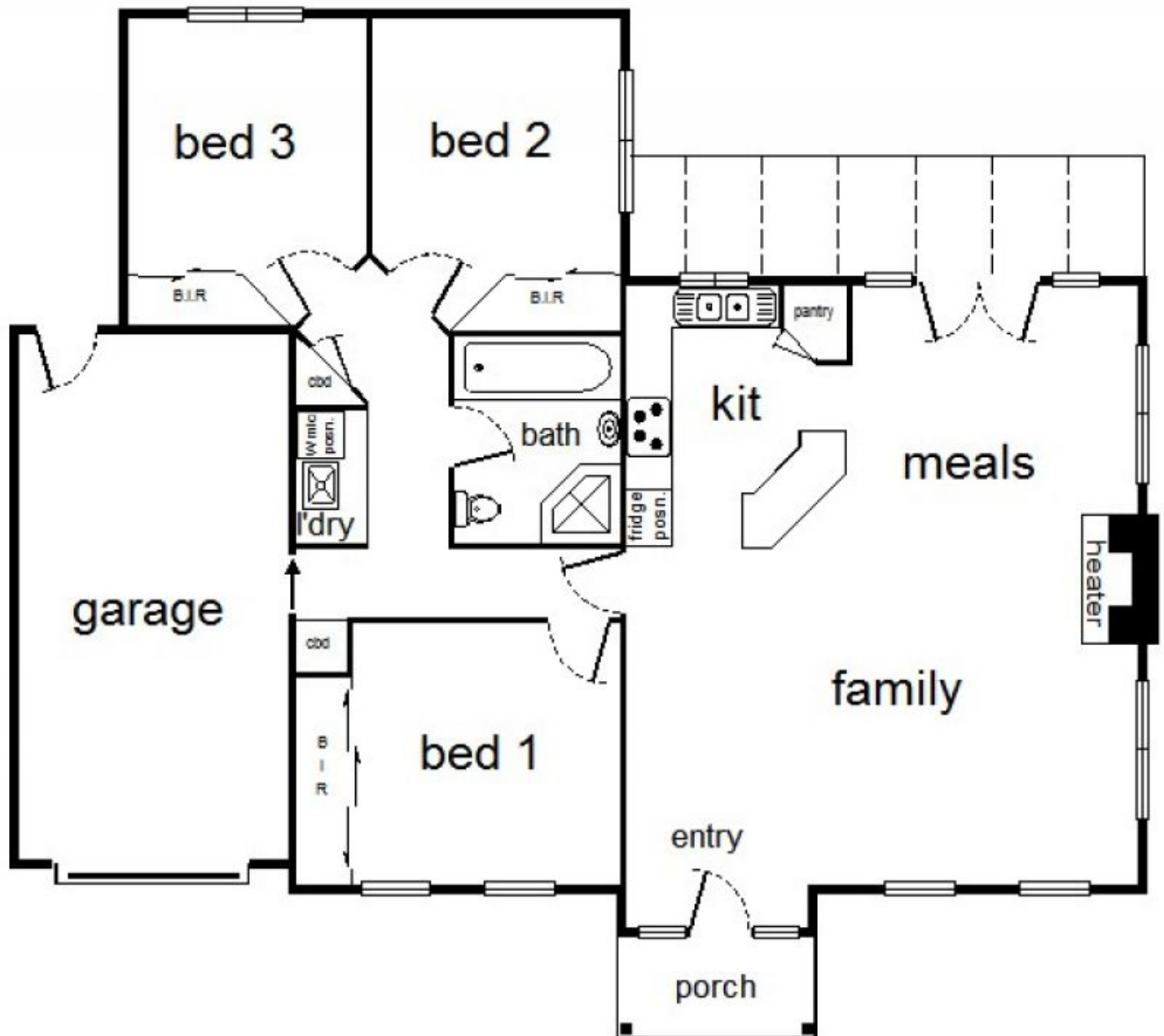


0 1 2 3 4



approx. scale (m)

This plan is a sketch, and all
data shown is general only.



1/338 Norfolk Street, Albury